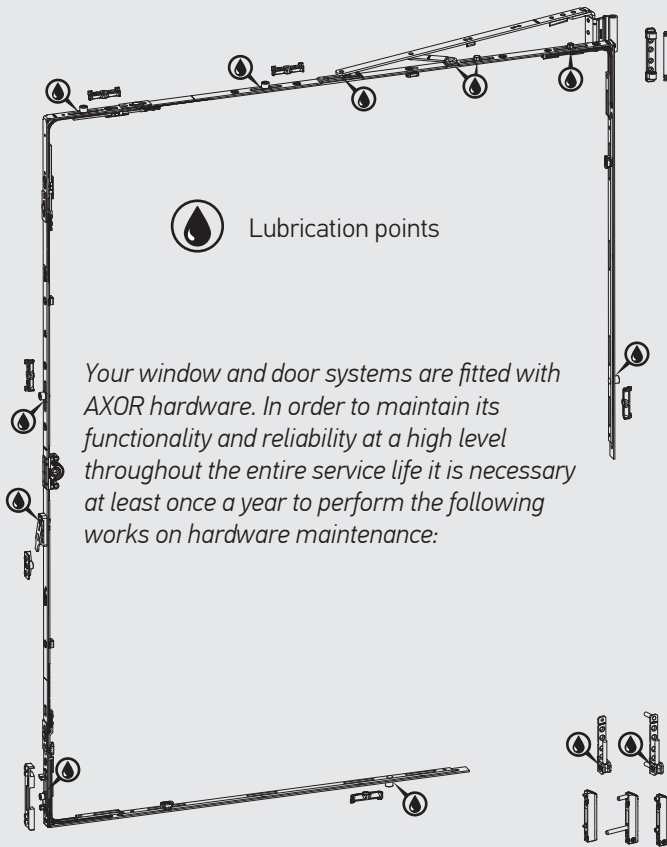


Hardware maintenance



Lubrication points

Your window and door systems are fitted with AXOR hardware. In order to maintain its functionality and reliability at a high level throughout the entire service life it is necessary at least once a year to perform the following works on hardware maintenance:

1. Lubricate all moving and locking points of the hardware.
2. Use oils containing no acids and resins.
3. Tighten fixing screws, if necessary. Check carefully for tear and wear and fixing of components affecting safety.
4. Use hinge covers.
5. If the hardware of your window is not fitted with hinge covers, check whether the top hinge bearing pin is inserted from the bottom until it clicks.
6. Machine oil can be used to wipe the pre-cleaned hardware surface.

For proper hardware functioning, the following operations must be performed by trained specialists only.

1. Replacement of hardware parts.
2. Adjustment of hardware components, in particular bottom hinges and stay arm.
3. Sash removal and hanging.

Modern production



AXOR's factory is equipped with progressive and high-tech equipment it's using the best technology and multilevel system of quality control which covers each stage of production. The factory is automated maximally, all process are organized in accordance with standards which were accepted in Europe.

All AXOR's factory process are built in such way, that to be secure for people's life and environment too.

Warehousing logistics of the plant is based on address system of accounting and keeping of goods, that helps accurately and quickly to collect sets of orders.

The quality of output is controlled on each stage of production, beginning from checking of raw materials, incoming control, and finishing of output's testing before shipping. The control of quality is carried out very carefully and it's conducting as into own laboratory so and in independent international institute of window technology, it's Ift Rosenheim (Germany).

AXOR



get more information
about window hardware

KOMFORT LINE **K-3**

+38 (067) 500-77-79
+38 (056) 794-0-766

instagram.com/axor_live

facebook.com/AxorIndustry

+38 067 55-42-777

infoaxor@axorindustry.com

High product quality

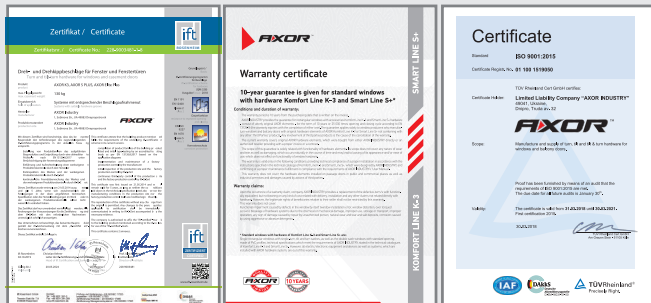
Stable high-quality of producing output is the matter of principle for us.

For the purpose of quality control of window hardware's producing on whole area of AXOR Industry it's working own laboratory for 24 hours, seven days per week in mode non-stop. That laboratory is equipped with high-tech equipment and qualified staff.

In that laboratory it's conducting complete cycle of tests in accordance with EN 13126-8, namely:

- by the number of complete tilt and turn cycles, and single turn cycles;
- on the sustainability of hinges group to increased loads and tests of corrosion resistance;

The tests' results showed that TM AXOR can carry with confidence more than 30 000 of sash's opening, this is the same that 15 years of windows' exploitation with activity.

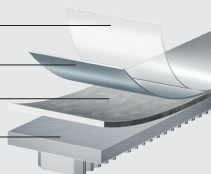


According to tests' results of independent laboratory there was assigned the 5th grade of corrosion resistance for TM AXOR's coating, it's the highest corrosion resistance grade according to European requirements.

Salt-spray test: salt fog's temperature is 40°C

Tests' duration is 480 hours.

- varnish covering
- passivating and chromating
- zinc layer
- steel



? Do you care for small childrens safety?



safety for children



Durability



Burglar protection

Modern safety system

First Tilt ("initially tilting") — it is hardware set, in which habitual sequence "opening/tilting" was changed. During handle's rotation to horizontal position a window is tilting for airing, and in vertical position a window is opening completely. That technology was designed to provide some safety for children, given that it's more difficult for children to rotate a handle in the up position.

? Do you need fresh air flow in cold season without cooling your room?



Microventilation

Microventilation serves for the room airing in cold season avoiding a draft, which can occur during a sash is in «tilt» position. A little gap between a sash and a frame provides constant flow of fresh air and does not influence substantially on heat losses in the room.

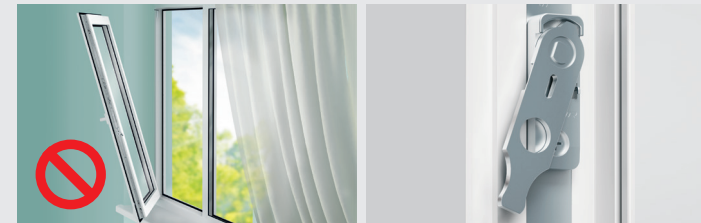
? Do you want to control ventilation of your room?



Step-by-step ventilation

Step-by-step ventilation allows you to set several fixed positions of a sash providing airing of your room without drafts. Available range of an air gap is 12-20 mm.

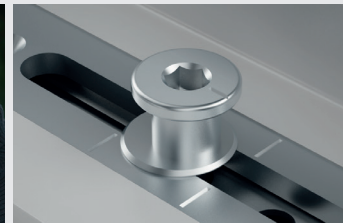
? Do you want to avoid occasional opening and hanging down of a sash?



Wrong operation safety device

The device serves for a sash lifting during closing and prevents its hanging down in operation. It makes the window closing more soft and smooth. Wrong operation safety device with sash lifter is special hardware element that provides smooth operation of your window. It lifts a sash for smooth closing as well as prevents occasional opening of the window.

? Do you live on the ground or the top floor?



Burglarproof hardware

Hardware, including burglarproof elements, provides additional protection of your home. Komfort Line K-3 offers optional use of a corner transmission and a middle lock equipped with mushroom pins. In combination with special safety tilt locking plates they make significantly difficult window-breaking.

? Do you want to close a door while going to your balcony or loggia?



Balcony latch

A latch provides easy fixation of a balcony door when you are going outside and prevents its opening, for example, by a draft. In order to come back inside the room, you need to push slightly a door only.