

**SLIDING SYSTEM**

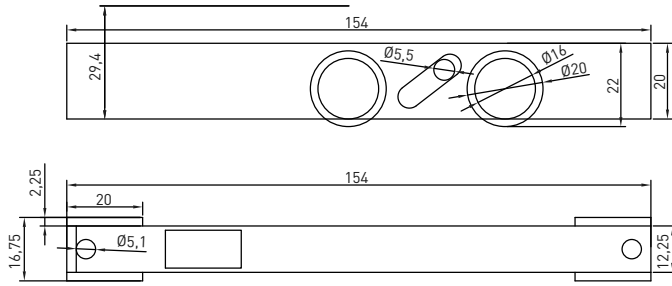




rev. 2.00.00  
26.06.2020

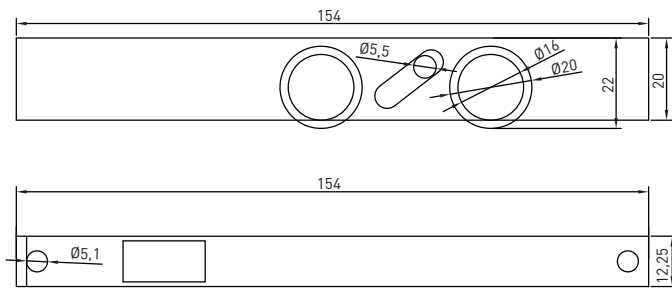
## SA01

### SLIDING ROLLER LARGE (DOUBLE)



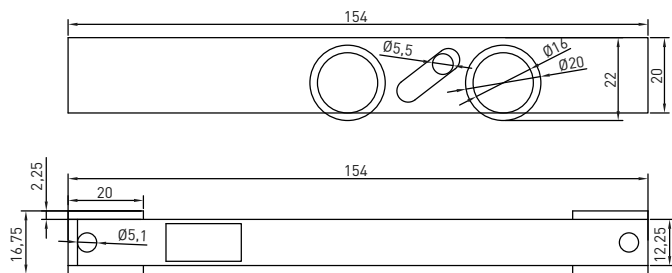
## SA01K

### SLIDING ROLLER LARGE (DOUBLE)



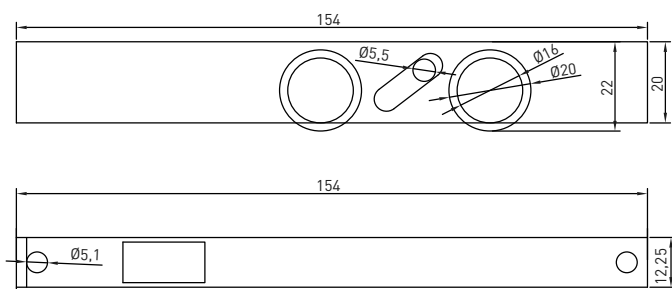
## PM16

### SLIDING ROLLER LARGE (DOUBLE) IMPORTED BRASS



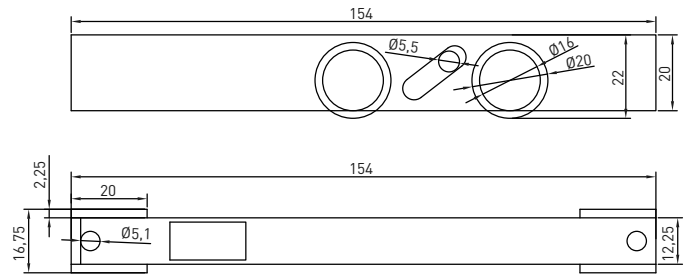
## PM16K

### SLIDING ROLLER LARGE (DOUBLE) IMPORTED BRASS



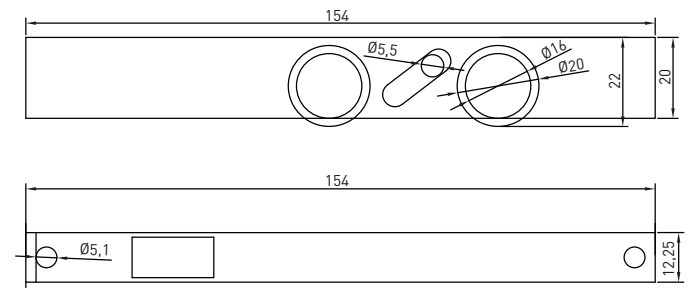
## SA16

SLIDING ROLLER LARGE (DOUBLE)  
BRASS



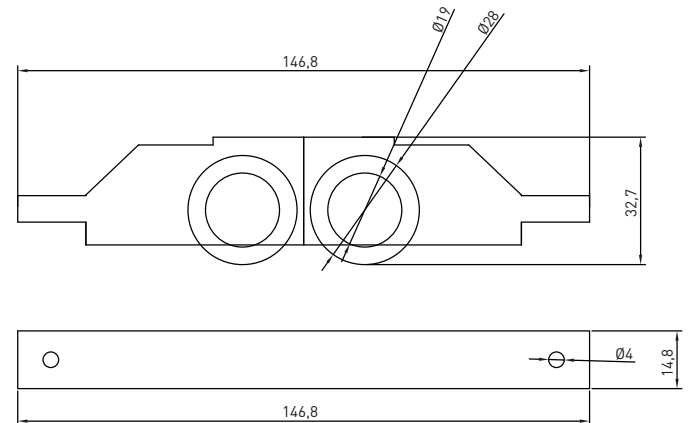
## SA16K

SLIDING ROLLER LARGE (DOUBLE)  
BRASS



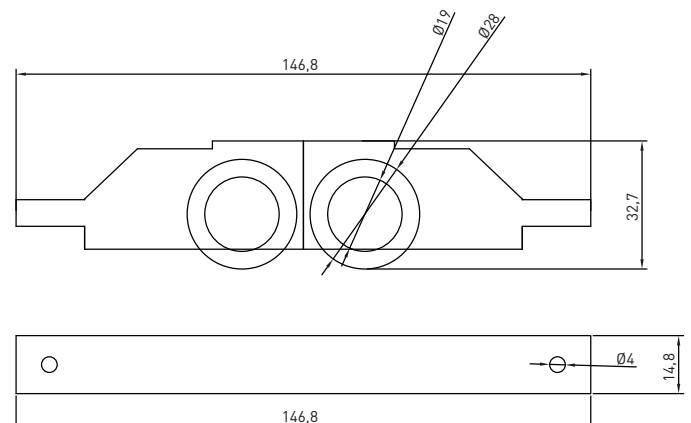
## SA04

SLIDING ROLLER LARGE (DOUBLE)  
PLASTIC



## PR04

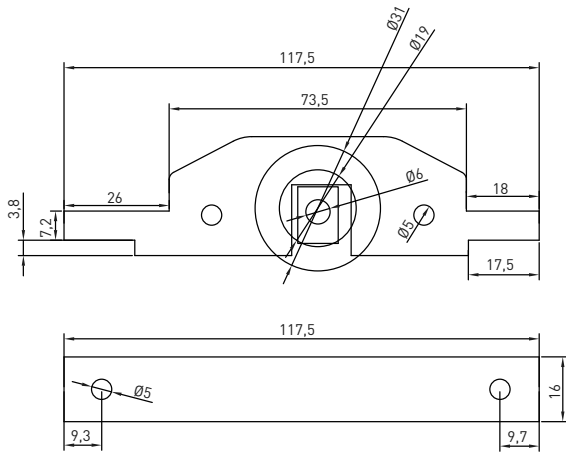
SLIDING ROLLER LARGE (DOUBLE)  
BRASS





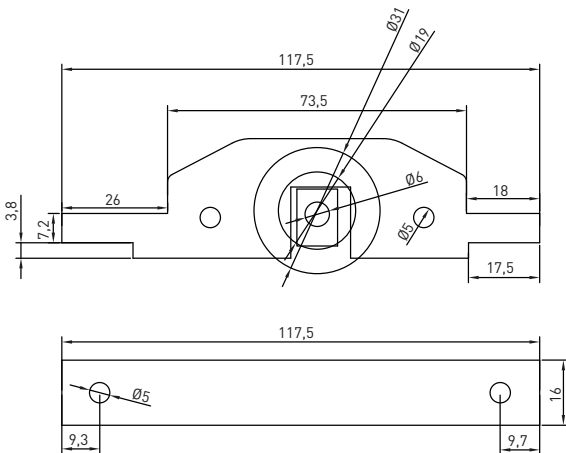
**SA02**

**SLIDING ROLLER LARGE (DOOR)**



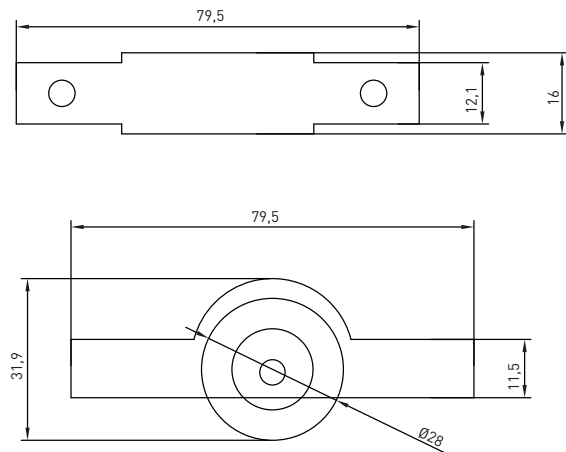
**SA03**

**SLIDING ROLLER LARGE (BRASS)**



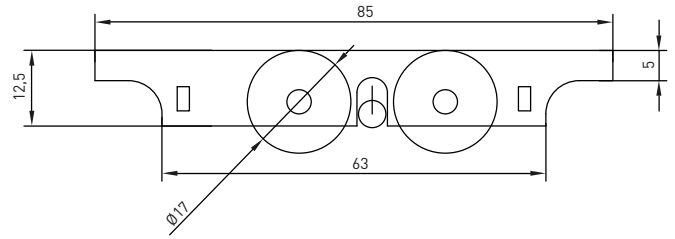
**PR01**

**PIMAS WHEEL (BRASS)**



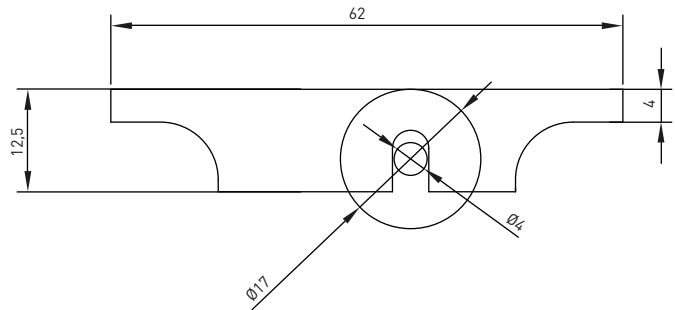
## SA47

### COUPLE WITH SMALL WHEEL



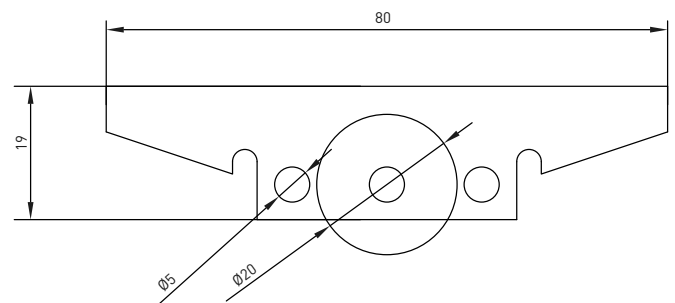
## SA49

### SMALL SLIDING WHEEL SET



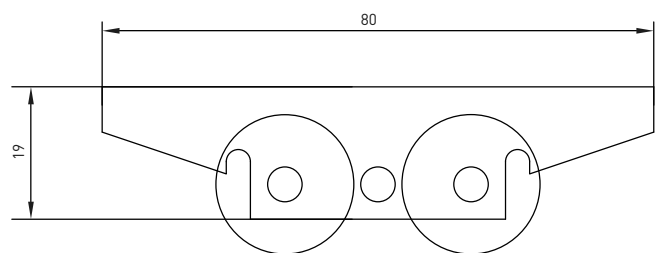
## SA50

### TAURUS WHEEL (WINHOUSE)



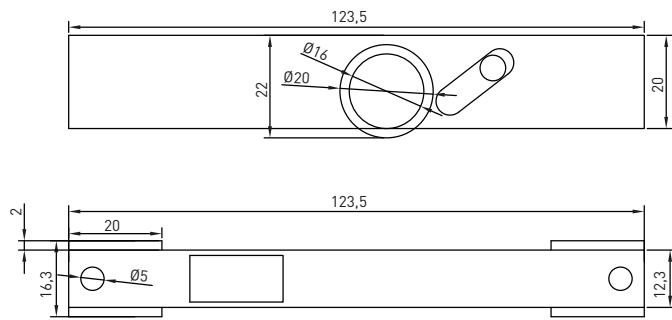
## SA51

### TAURUS WHEELS DOUBLE (WINHOUSE)



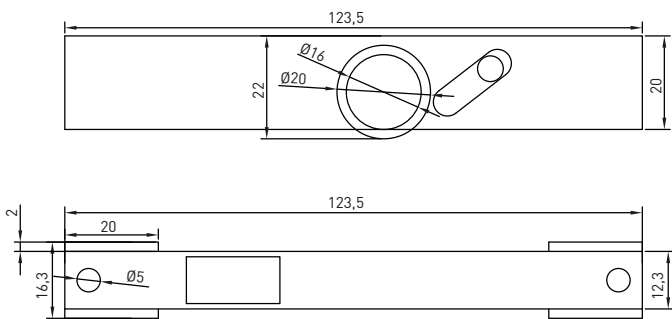
## SA27

### SINGLE WHEEL



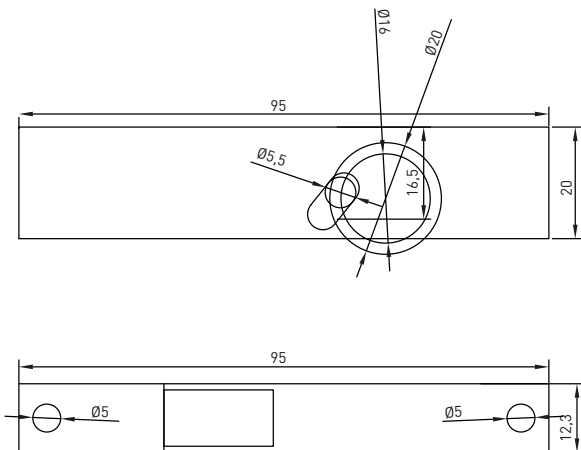
## PM27

### SINGLE WHEEL IMPORTED BRASS



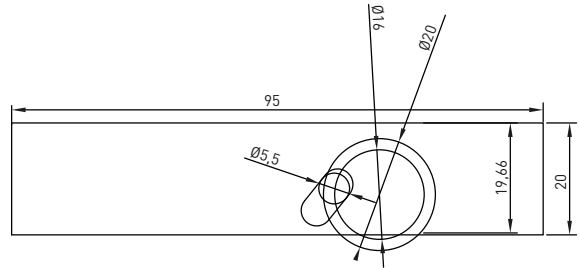
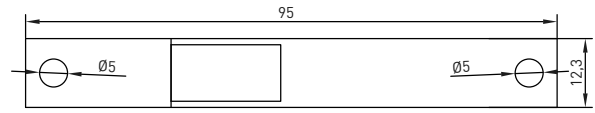
## PM27E

### SINGLE WHEEL IMPORTED BRASS ECONOMIC



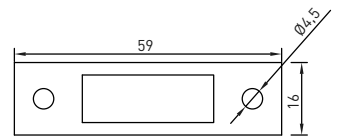
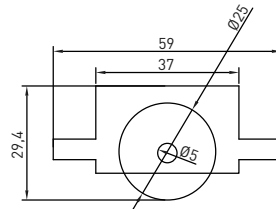
## SA27E

### SINGLE WHEEL ECONOMIC



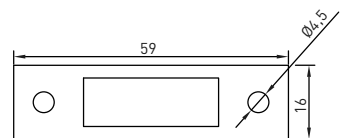
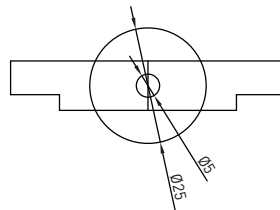
## SA05

### SLIDING ROLLER SMALL (IMPLICIT)



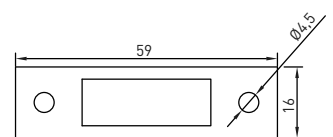
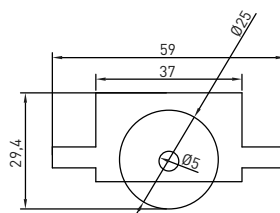
## SA06

### SLIDING ROLLER (OPEN TOP)



## SA17

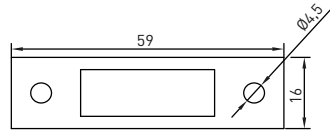
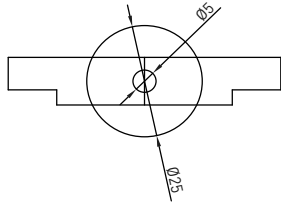
### SLIDING ROLLER SMALL (IMPLICIT) BRASS





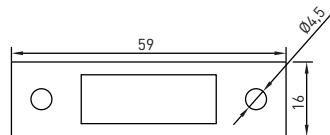
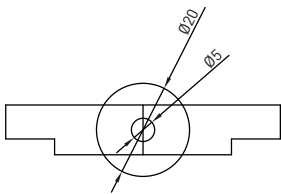
**SA24**

SLIDING ROLLER SMALL (OPEN TOP)  
BRASS



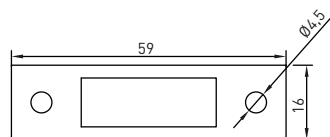
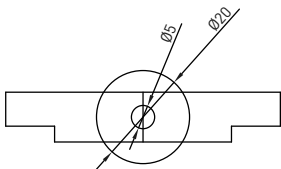
**SA07**

SLIDING ROLLER (BRASS)



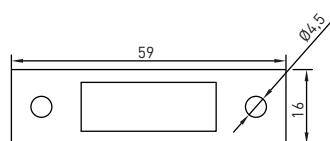
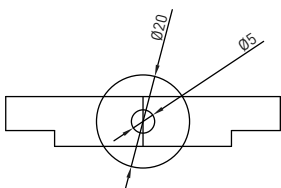
**SA08**

ECONOMIC WHEEL (GROOVE)



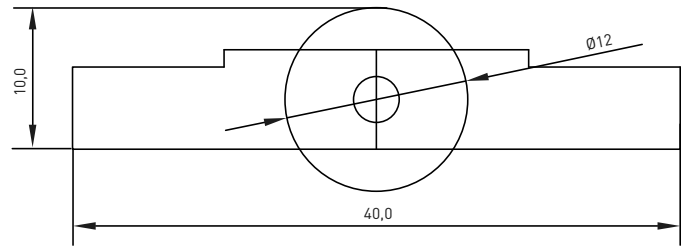
**SA09**

ECONOMIC WHEEL STRAIGHT



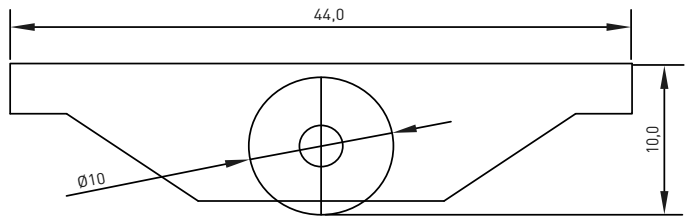
## SIN1

### FLAPPER WHEEL ERPEN SERIES

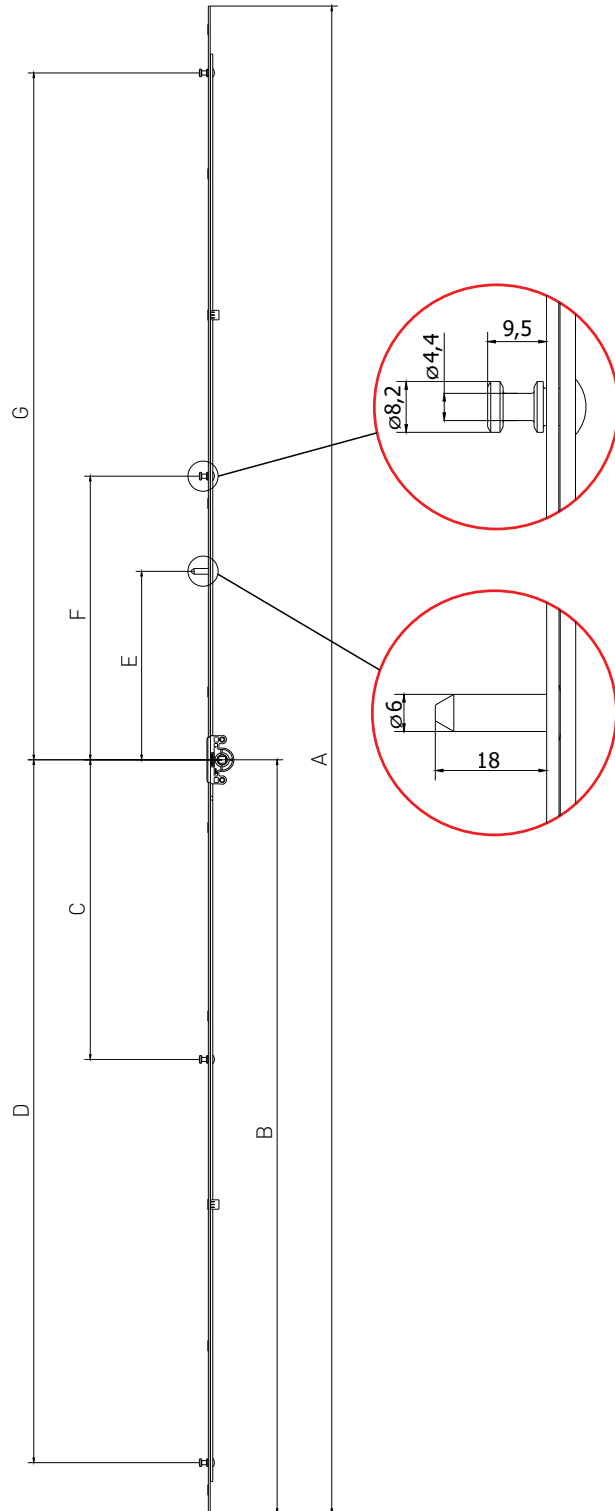



## SIN4

### FLAPPER WHEEL UNIVERSAL IRON

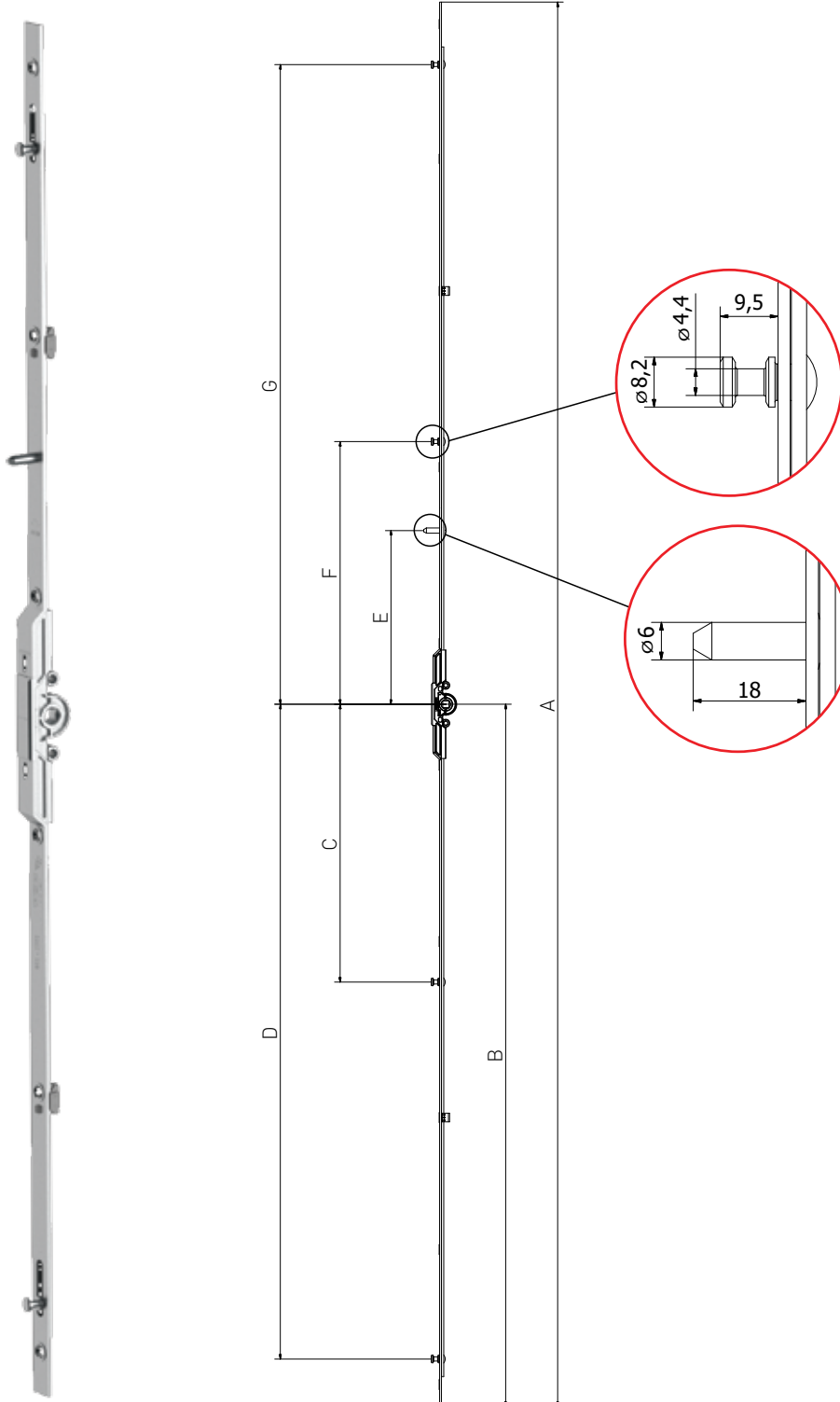


GEAR FOR SLIDING SYSTEM,  
BACKSET 15 MM




Description	SRH (mm)	Dimensions								Part No.
		A	B	C	D	E	F	G		
Gear for sliding system 1, L=300, 280-400	280-400	300	150	-	96	49	-	79	3	K1005-03-N03
Gear for sliding system 2, L=400, 401-600	401-600	400	200	-	146	99	-	129	4	K1005-04-N03
Gear for sliding system 3, L=600, 601-800	601-800	600	300	-	246	152	-	229	4	K1005-06-N03
Gear for sliding system 4, L=800, 801-1000	800-1000	800	400	-	346	152	-	329	6	K1005-08-N03
Gear for sliding system 5, L=1000, 1001-1200	1001-1200	1000	500	-	446	200	101	429	6	K1005-10-N03
Gear for sliding system 6, L=1200, 1201-1400	1201-1400	1200	600	-	546	200	101	529	8	K1005-12-N03
Gear for sliding system 7, L=1400, 1401-1600	1401-1600	1400	700	-	646	200	101	629	8	K1005-14-N03
Gear for sliding system 8, L=1600, 1601-1800	1601-1800	1600	800	318	746	200	301	729	10	K1005-16-N03
Gear for sliding system 9, L=1800, 1801-2000	1801-2000	1800	900	318	846	200	301	829	10	K1005-18-N03
Gear for sliding system 10, L=2000, 2001-2200	2001-2200	2000	1000	318	946	200	301	929	12	K1005-20-N03
Gear for sliding system 11, L=2200, 2201-2400	2201-2400	2200	1100	318	1046	200	301	1029	12	K1005-22-N03

GEAR FOR SLIDING SYSTEM,  
BACKSET 7,5 MM



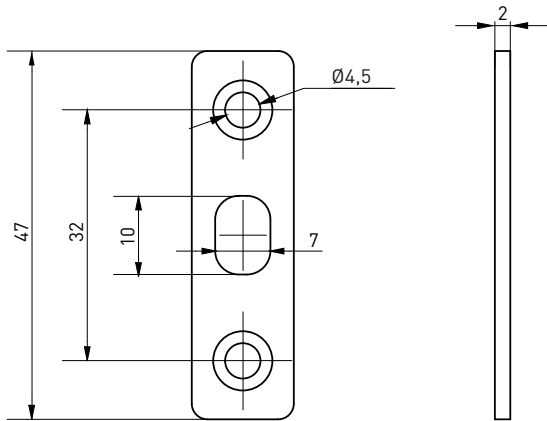


Description	SRH (mm)	Dimensions								Part No.
		A	B	C	D	E	F	G		
Gear for sliding system 2, L=400, 401-600, backset 7,5 mm	401-600	394	197	-	143	96	-	126	4	K1048-04-N03
Gear for sliding system 3, L=600, 601-800, backset 7,5 mm	601-800	594	297	-	243	149	-	226	4	K1048-06-N03
Gear for sliding system 4, L=800, 801-1000, backset 7,5 mm	800-1000	794	397	-	343	149	-	326	6	K1048-08-N03
Gear for sliding system 5, L=1000, 1001-1200, backset 7,5 mm	1001-1200	994	497	-	443	197	98	426	6	K1048-10-N03
Gear for sliding system 6, L=1200, 1201-1400, backset 7,5 mm	1201-1400	1194	597	-	543	197	98	526	8	K1048-12-N03
Gear for sliding system 7, L=1400, 1401-1600, backset 7,5 mm	1401-1600	1394	697	-	643	197	98	626	8	K1048-14-N03
Gear for sliding system 8, L=1600, 1601-1800, backset 7,5 mm	1601-1800	1594	797	315	743	197	298	726	10	K1048-16-N03
Gear for sliding system 9, L=1800, 1801-2000, backset 7,5 mm	1801-2000	1794	897	315	843	197	298	826	10	K1048-18-N03
Gear for sliding system 10, L=2000, 2001-2200, backset 7,5 mm	2001-2200	1994	997	315	943	197	298	926	12	K1048-20-N03
Gear for sliding system 11, L=2200, 2201-2400, backset 7,5 mm	2201-2400	2194	1097	315	1043	197	298	1026	12	K1048-22-N03

## LOCKING ELEMENTS

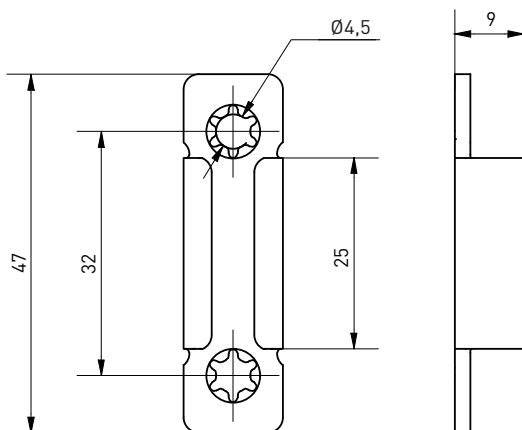
**A7109-00-N03**

LOCKING PLATE FOR SLIDING SYSTEM  
SAFETY PIN



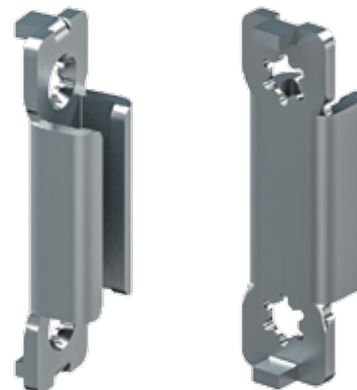
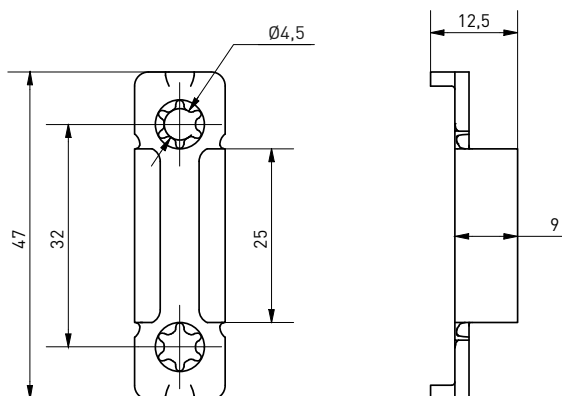
**A7118-00-N03**

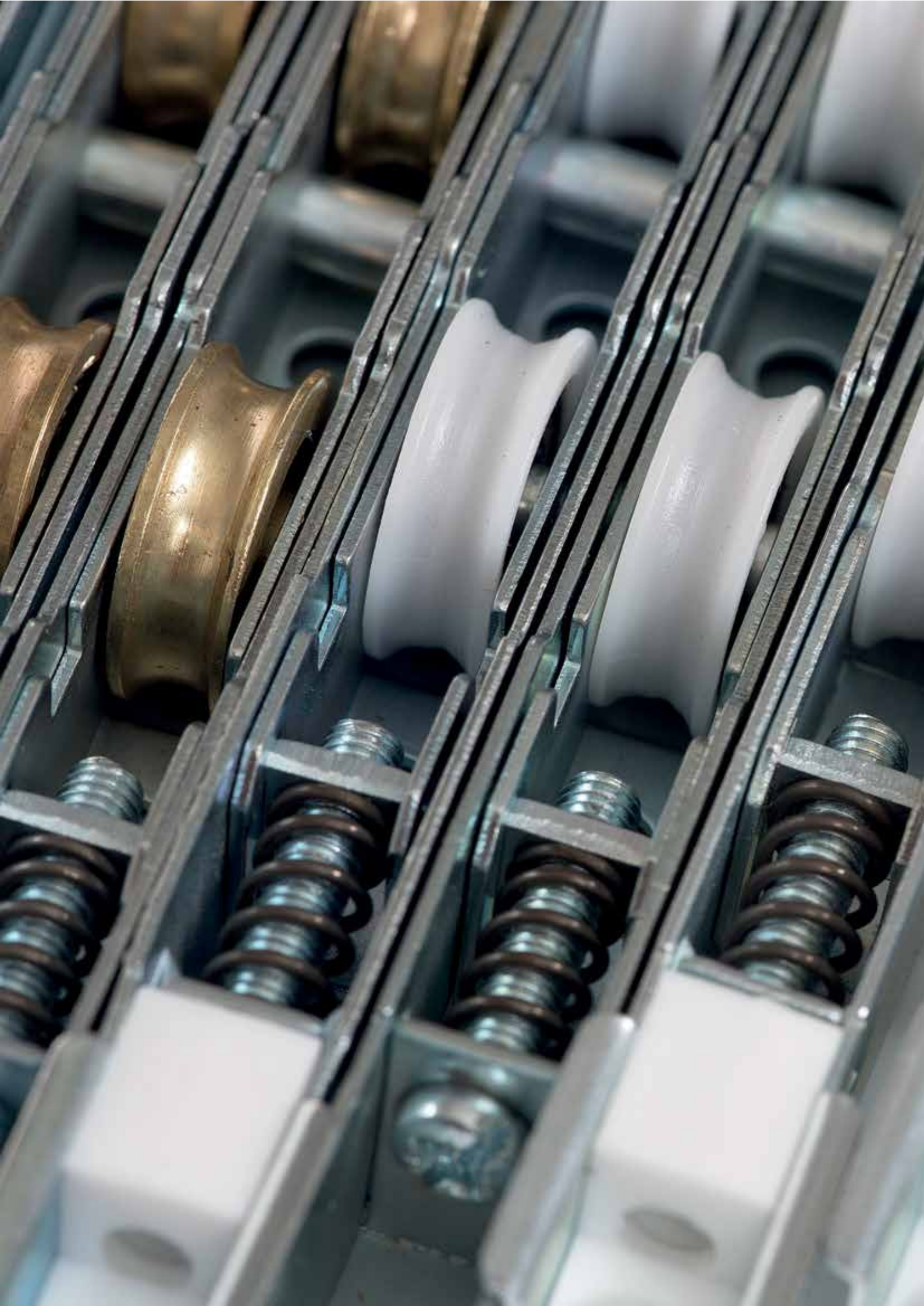
SLIDING SYSTEM LOCKING PLATE (FLAT)




**A7119-00-N03**

SLIDING SYSTEM LOCKING PLATE (WITH LEGS)







AXOR INDUSTRY  
32, PRATSI AVENUE,  
DNIPRO, 49041, UKRAINE.  
[WWW.AXORINDUSTRY.COM](http://WWW.AXORINDUSTRY.COM)