

AXOR®

ARTE INTERIOR



CONCEALED HINGES

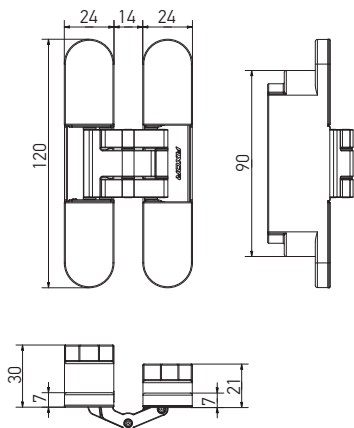
FOR INTERIOR DOORS



axorindustry.com

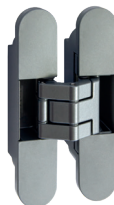
CONCEALED INTERIOR DOOR HINGES 24/24×120

Concealed interior door hinges ARTE Interior 24/24×120 for timber and MDF doors, with the possibility of adjustment. Maximum door weight for a set of two hinges up to 60 kg. Quantity in the package: 2 pcs.



D5004-00-N01

White
RAL 9016



D5004-00-N03

Chrome matte



D5005-00-N01

White RAL 9016,
zinc coated



D5004-00-N05

Gold



D5005-00-N03

Chrome matte,
zinc coated



D5004-00-N06

Bronze



D5005-00-N07

Matte black RAL 9005,
zinc coated

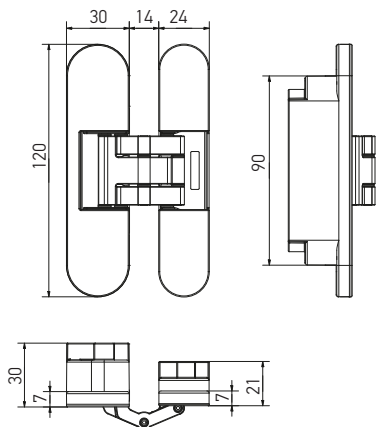


D5004-00-N07

Matte black RAL 9005

CONCEALED INTERIOR DOOR HINGES 30/24×120

Concealed interior door hinges ARTE Interior 30/24×120 for timber and MDF doors, with the possibility of adjustment. Maximum door weight for a set of two hinges up to 60 kg. Quantity in the package: 2 pcs.



D5014-00-N01

White
RAL 9016



D5014-00-N03

Chrome matte



D5015-00-N01

White RAL 9016,
zinc coated



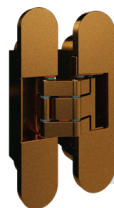
D5014-00-N05

Gold



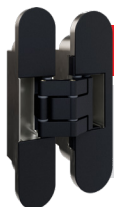
D5015-00-N03

Chrome matte,
zinc coated



D5014-00-N06

Bronze



D5015-00-N07

Matte black RAL 9005,
zinc coated

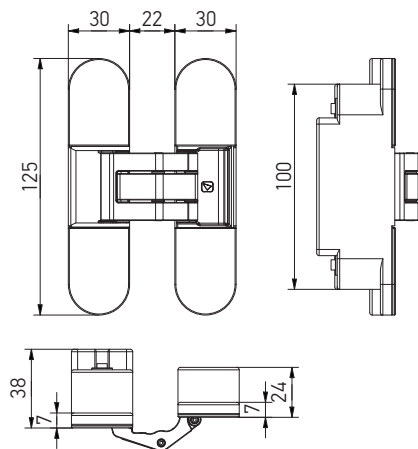


D5014-00-N07

Matte black RAL 9005

CONCEALED INTERIOR DOOR HINGES 30/30×125

Concealed interior door hinges ARTE Interior 30/30×125 for timber and MDF doors, with the possibility of adjustment. Maximum door weight for a set of two hinges up to 60 kg. Quantity in the package: 2 pcs.



D5020-00-N01

White
RAL 9016



D5020-00-N03

Chrome matte



D5021-00-N01

White RAL 9016,
zinc coated



D5020-00-N05

Gold



D5021-00-N03

Chrome matte,
zinc coated



D5020-00-N06

Bronze



D5021-00-N07

Matte black RAL 9005,
zinc coated

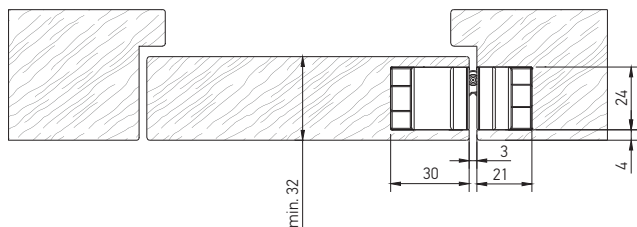


D5020-00-N07

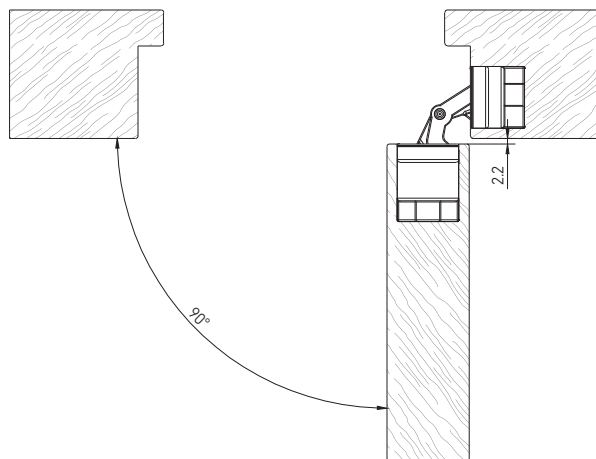
Matte black RAL 9005

INSTALLATION OF CONCEALED HINGES (24/24×120)

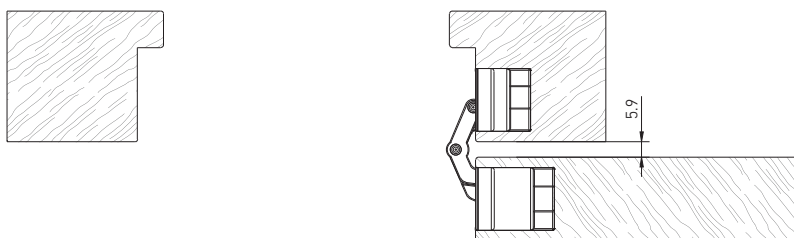
CLOSED



OPENED 90°

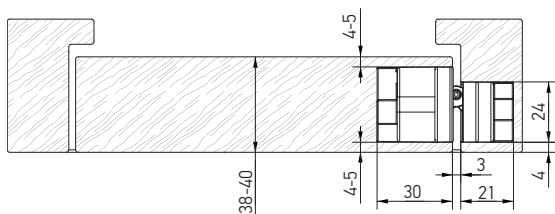


OPENED 180°

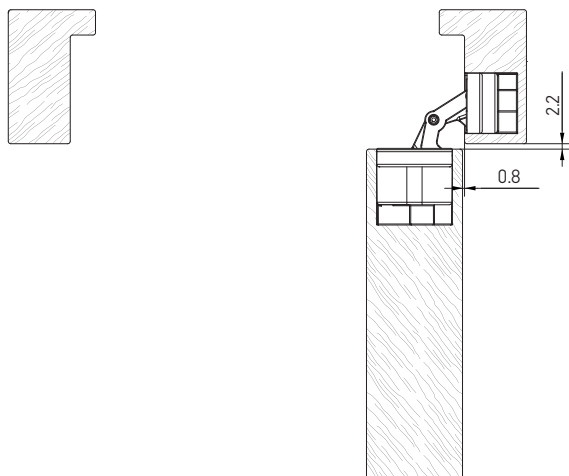


INSTALLATION OF CONCEALED HINGES (30/24×120)

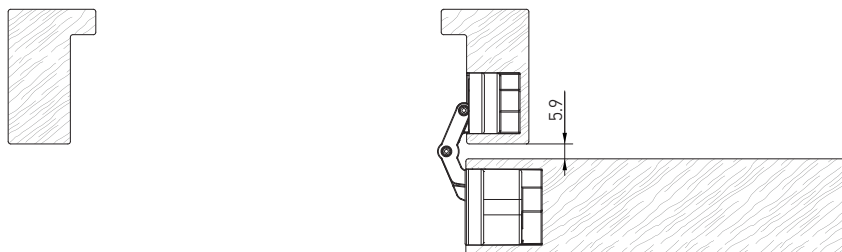
CLOSED



OPENED 90°



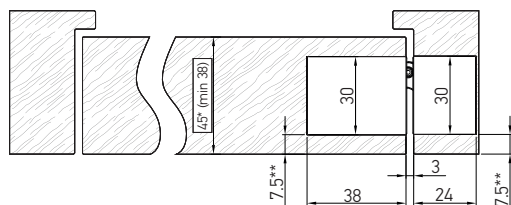
OPENED 180°



INSTALLATION OF CONCEALED HINGES (30/30×125)

Central position

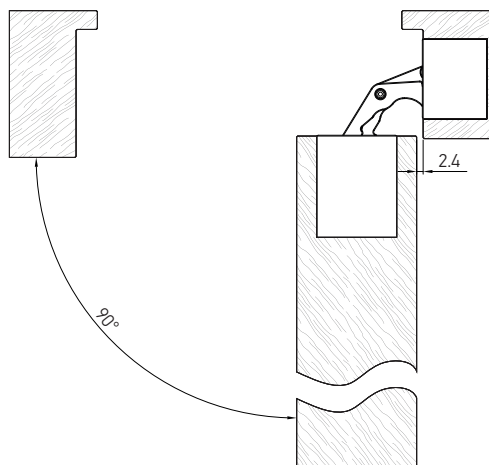
CLOSED



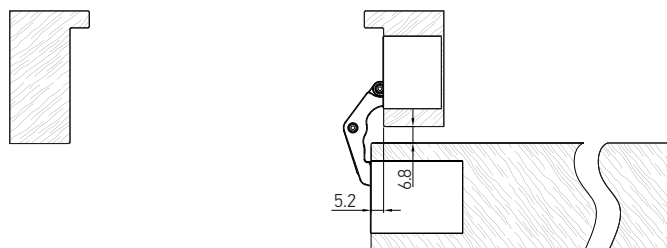
* central positioning of hinge up to 45 mm door leaf

** in depend of door leaf thickness

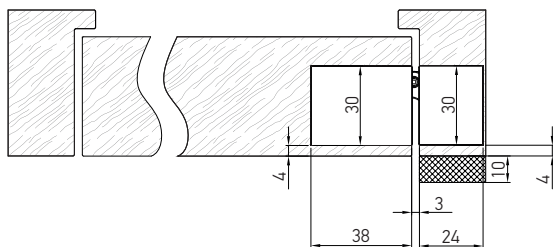
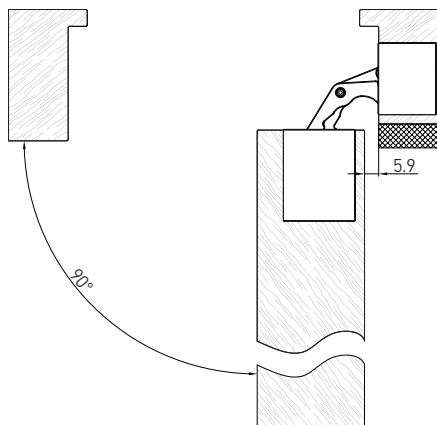
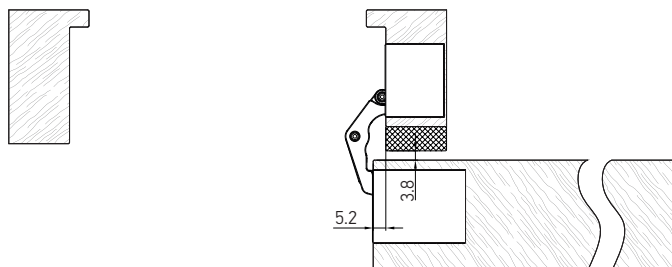
OPENED 90°

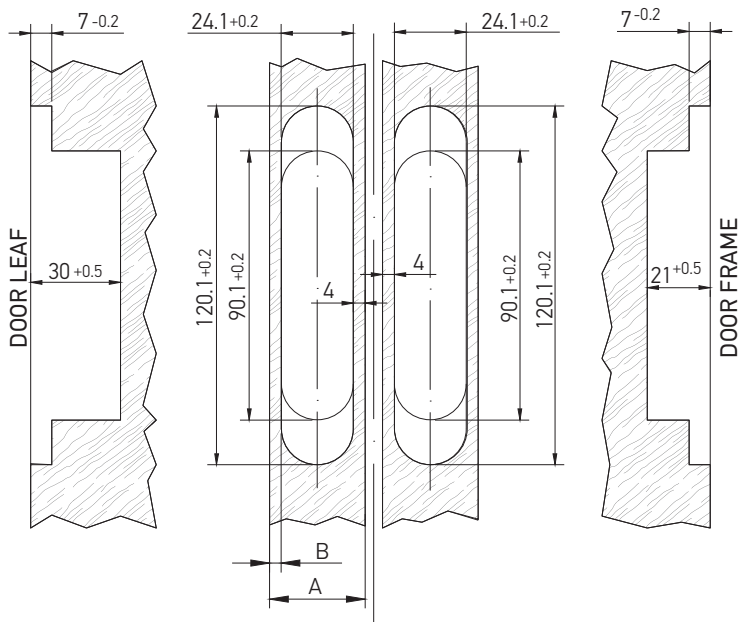


OPENED 180°



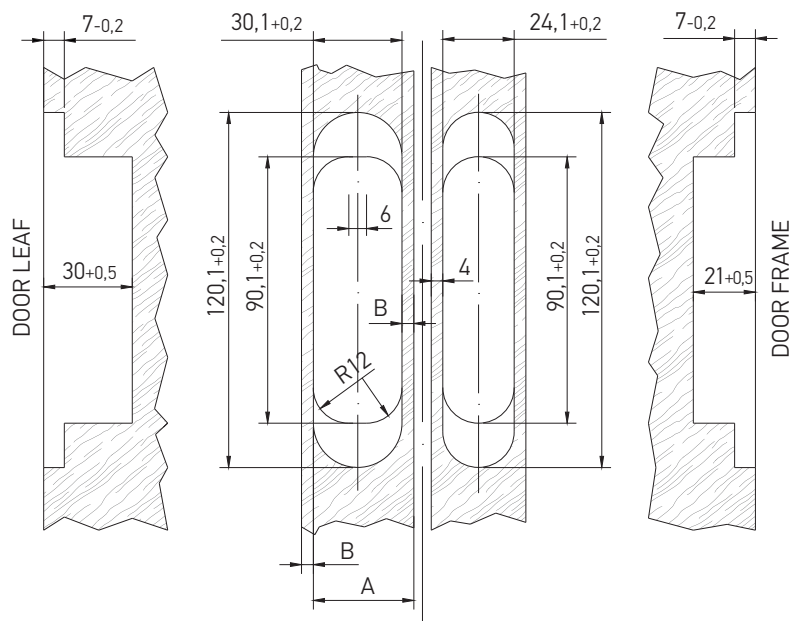
INSTALLATION OF CONCEALED HINGES (30/30×125) Position with displacement (with molding)

CLOSED**OPENED 90°****OPENED 180°**



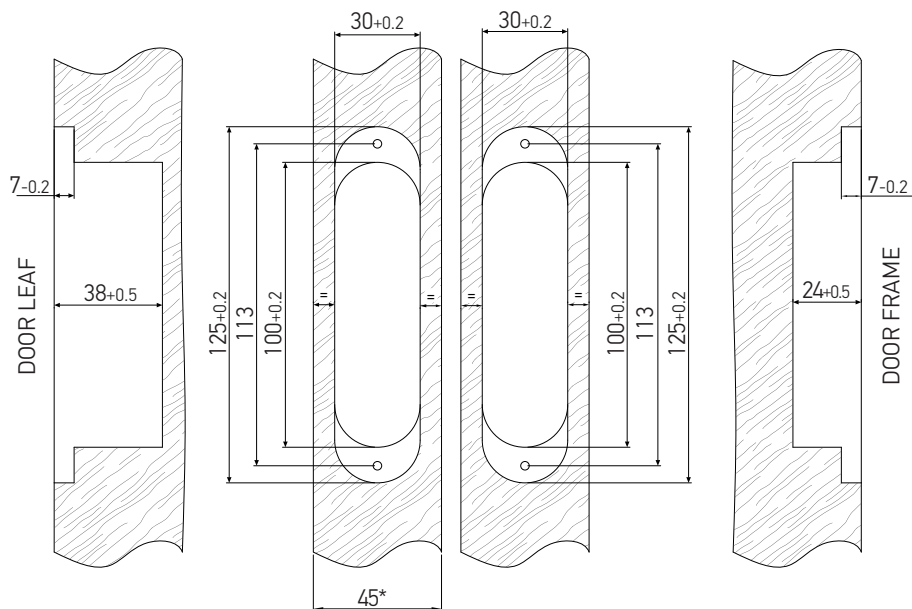
A, mm	B, mm
32	4
33	5
34	6
35	7
36	8
37	9
38	10
39	11
40	12
41	13
42	14

DIMENSIONS FOR MILLING (30/24×120)



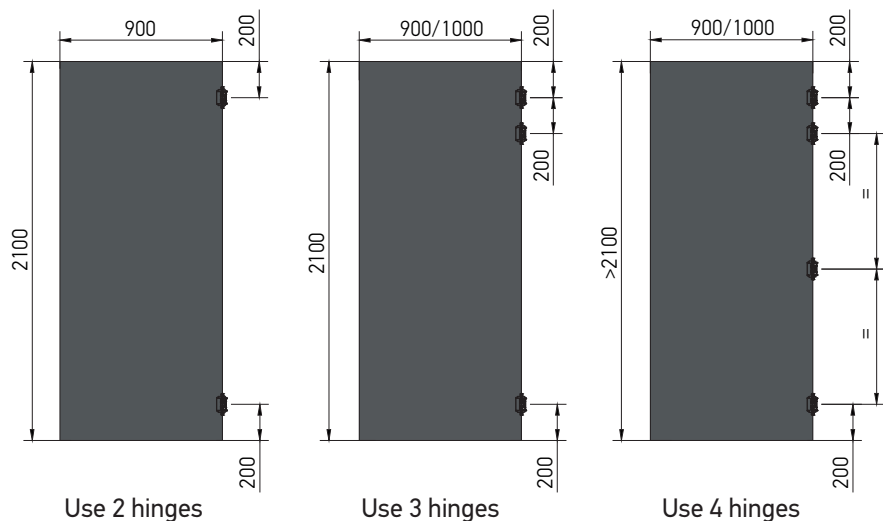
A, mm	B, mm
38	4
40	5

DIMENSIONS FOR MILLING (30/30×125)



* central positioning of hinge from 38 mm up to 45 mm door leaf

INSTALLATION SCHEME

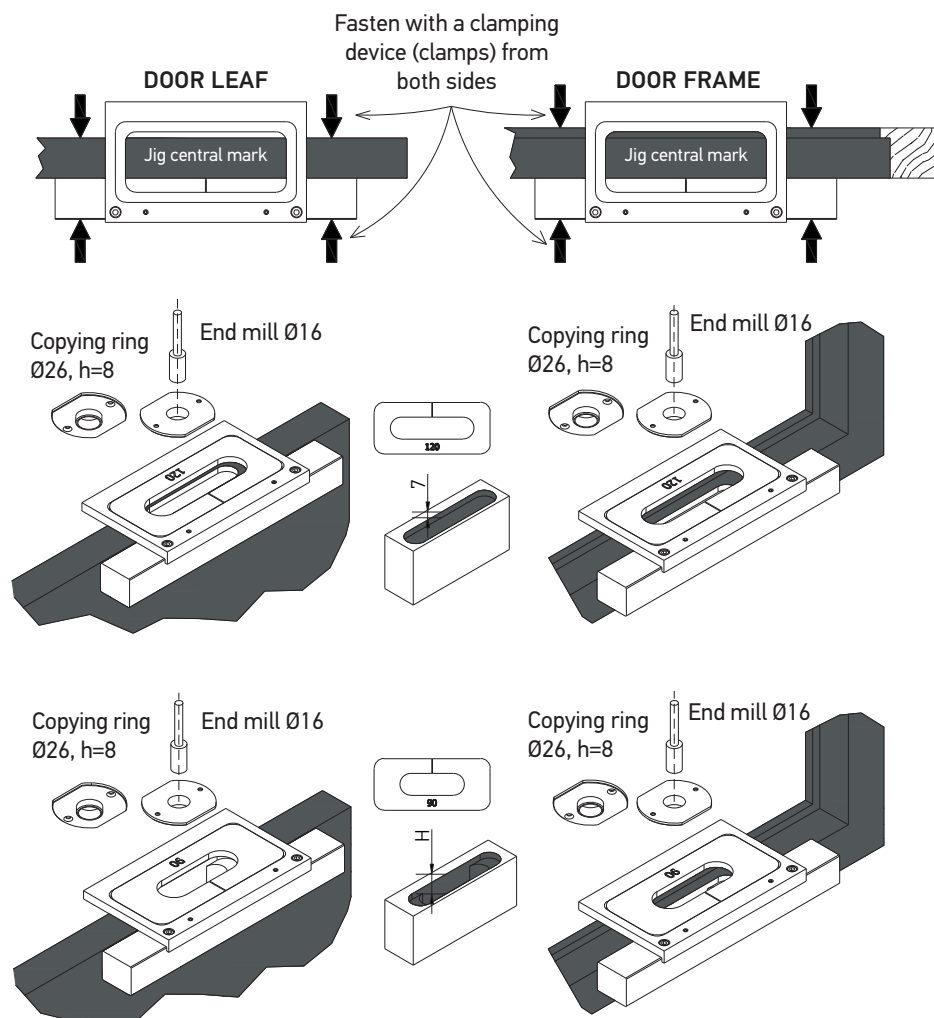


Required number of hinges*, pcs

Door height, mm	>2100	4	4	4	4	4
	2100	2	2	2	2	3
	2000	2	2	2	2	3
	1900	2	2	2	2	3
	1800	2	2	2	2	3
		600	700	800	900	1000
		Door width, mm				

* Door weight up to 60 kg

MILLING PROCEDURE (24/24×120)



H, mm	
Door leaf	Door frame
30	21

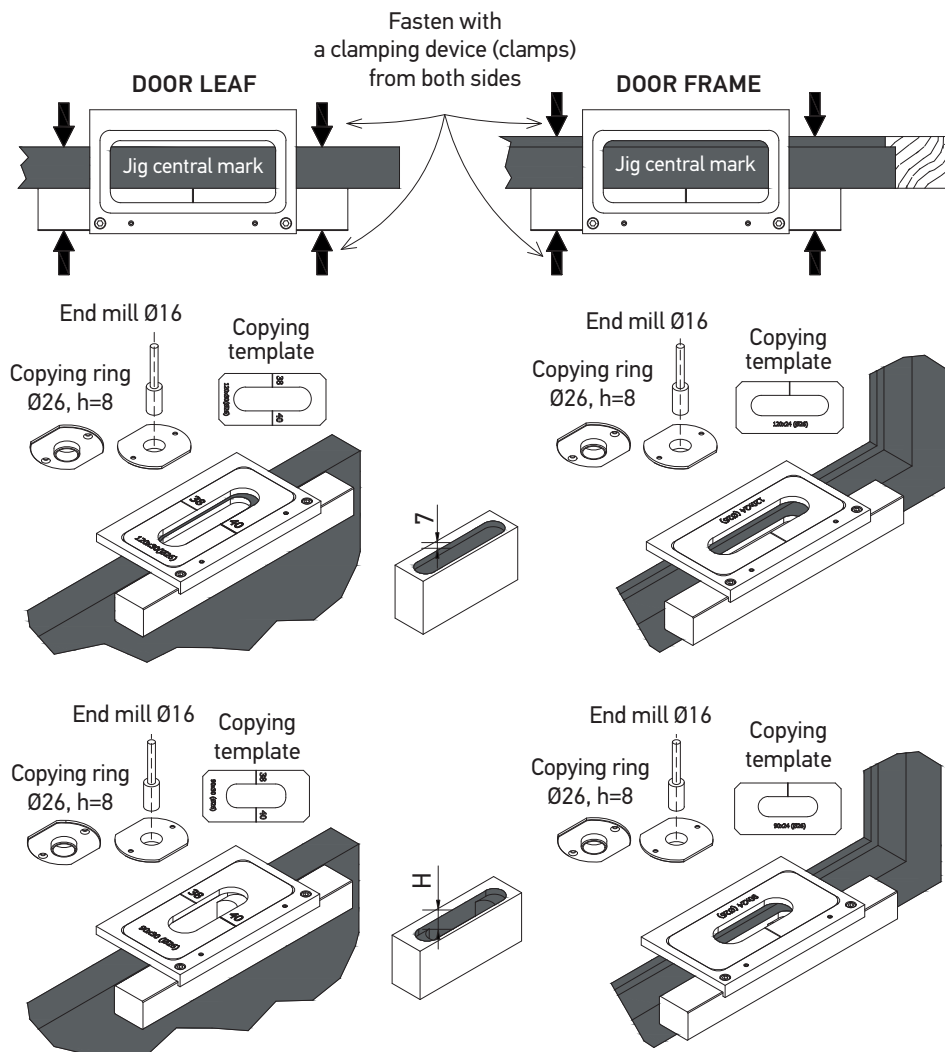
A7226-99-N07

Basic milling jig, 24 mm (PA)

A7*-**-N03**

Set of copying plates

MILLING PROCEDURE (30/24×120)



H, mm	
Door leaf	Door frame
30	21

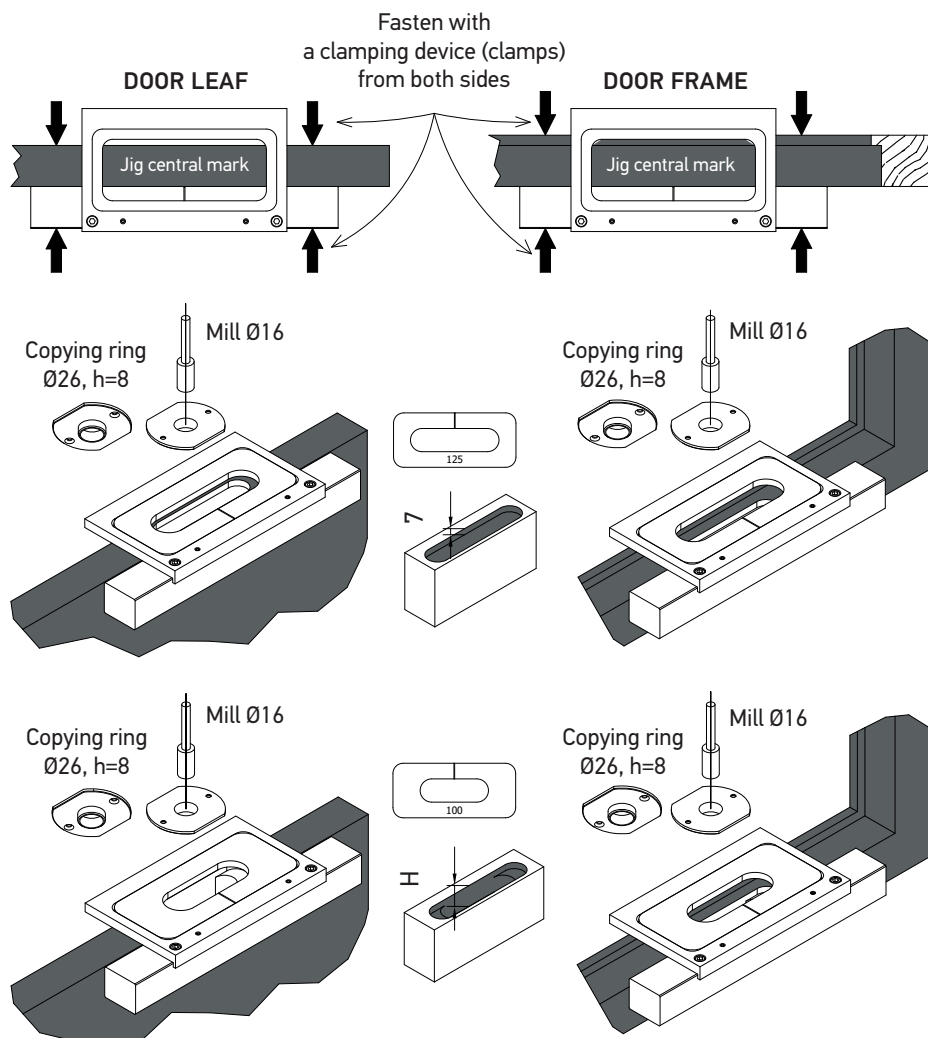
A7226-99-N07

Basic milling jig, 24 mm (PA)

A7***-**-N03

Set of copying plates

MILLING PROCEDURE (30/30×125)



H, mm	
Door leaf	Door frame
38	24

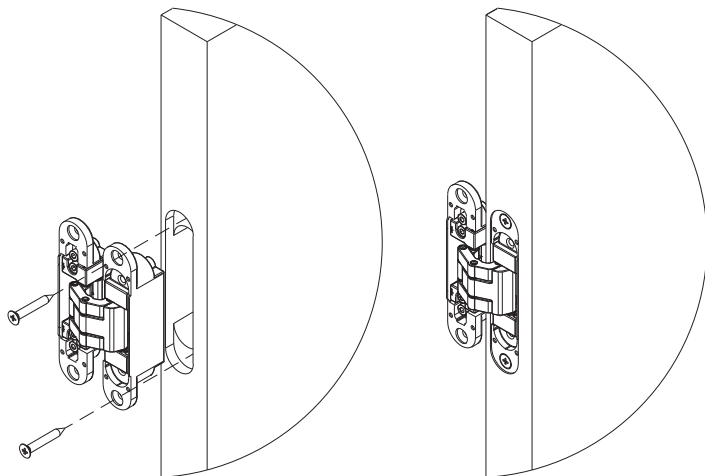
A7226-99-N07

Basic milling jig, 24 mm (PA)

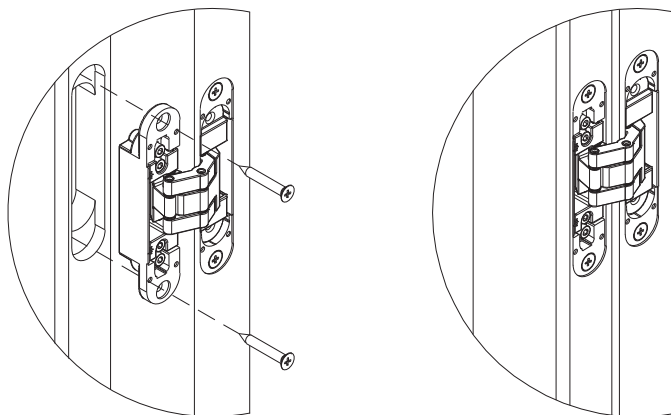
A7***-**-N03

Set of copying plates

INSTALLATION PROCEDURE (24/24×120; 30/24×120)

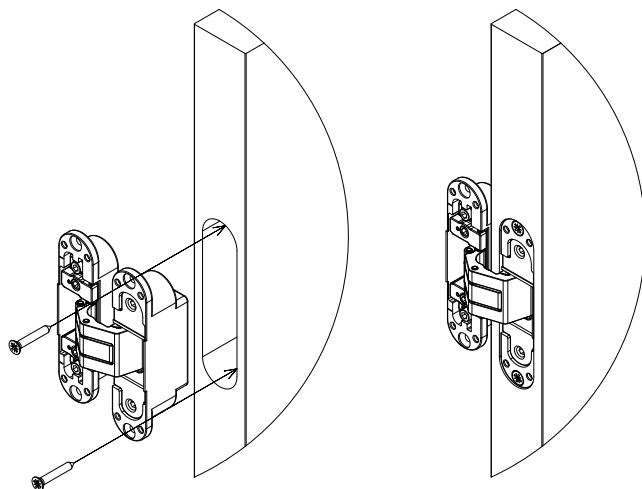


1. Install the hinges into the proper grooves on the door leaf, paying attention to the direction of opening (depth 30 mm).
2. Fix with screws Ø5 x min. 35.

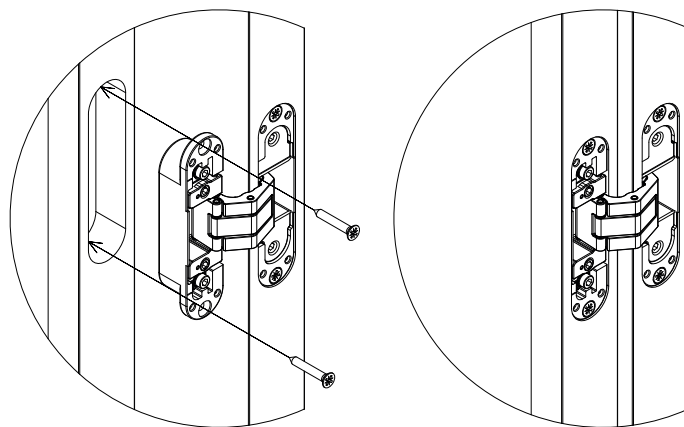


3. Install the door leaf on the door frame, inserting the hinges into the proper grooves (21 mm deep).
4. Fix with screws Ø5 x min. 25.

INSTALLATION PROCEDURE (30/30×125)

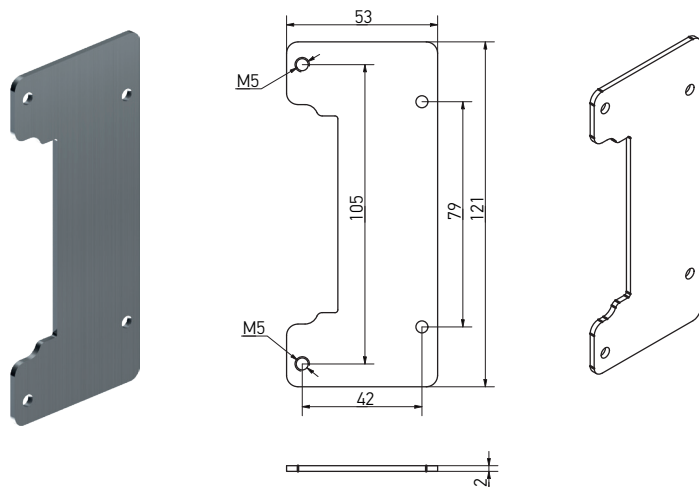


1. Install the hinges into the proper grooves on the door leaf, paying attention to the direction of opening (depth 38 mm).
2. Fix with screws Ø5 x min. 35.

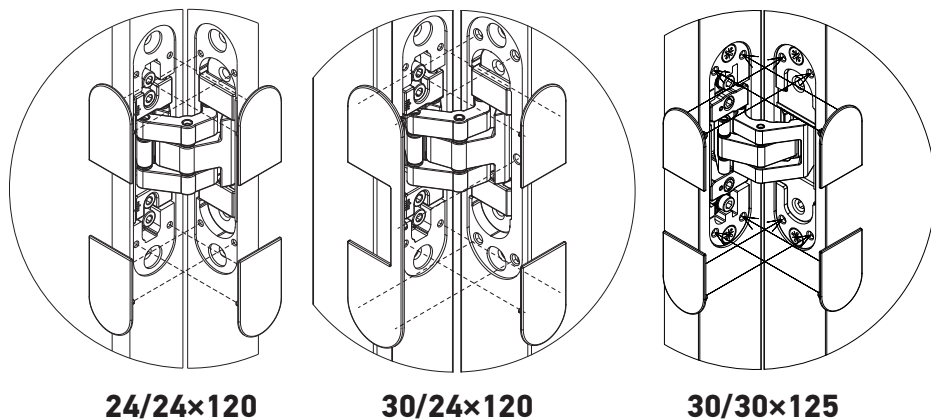


3. Install the door leaf on the door frame, inserting the hinges into the proper grooves (24 mm deep).
4. Fix with screws Ø5 x min. 25

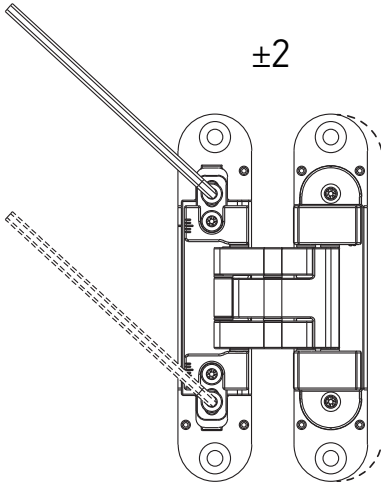
MOUNTING PLATE D9001-24-N03



INSTALLATION OF DECORATIVE COVERS



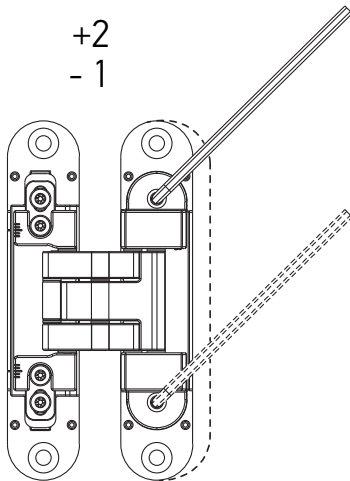
VERTICAL ADJUSTMENT (24/24×120; 30/24×120)



Within ± 2 mm.

Vertical adjustment is carried out on the part of the hinge installed in the door frame. To make the adjustment, it is necessary to loosen the two specified screws with a 3 mm hex key and lift up the door leaf to the required position. Using of a flat screwdriver is allowed, which can be inserted into the groove between the body and the adjustable part of the hinge and used as an additional lever. Holding the door leaf in the required position, tighten the fastening screws.

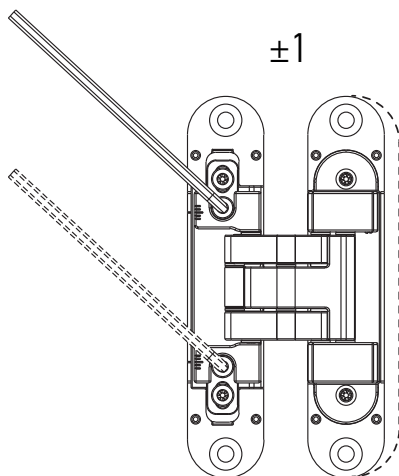
HORIZONTAL ADJUSTMENT (24/24×120; 30/24×120)



Within +2 mm (toward the hinges) / -1 mm.

Horizontal adjustment is carried out on the part of the hinge installed in the door leaf. To make the adjustment, it is necessary to screw in or unscrew the two specified screws, using a 3 mm hex key, thereby setting the door leaf in the required position. It is not allowed to screw in or unscrew only one screw immediately to the extreme position, only sequential screwing.

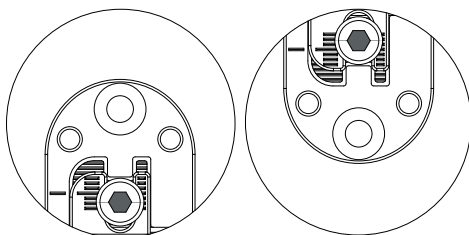
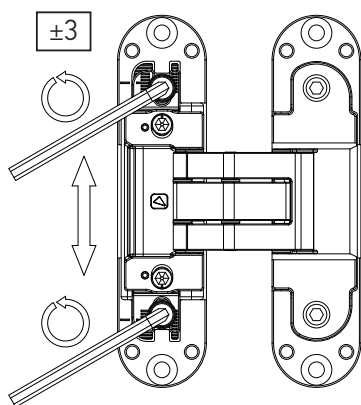
DEPTH ADJUSTMENT (24/24×120; 30/24×120)



Within ± 1 mm.

Depth adjustment is carried out on the part of the hinge installed in the door frame. To make the adjustment, it is necessary to loosen the two specified screws, using a 3 mm hex key, and then install the door leaf in the required position. After adjustment, tighten the fastening screws.

VERTICAL ADJUSTMENT (30/30×125)

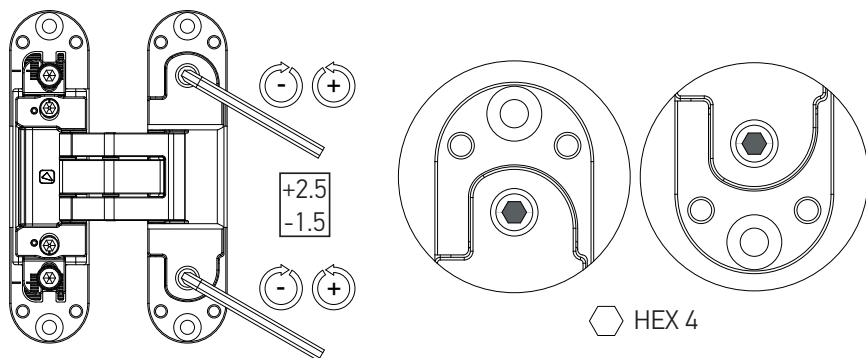


HEX 4

Within ± 3 mm.

Vertical adjustment is carried out on the part of the hinge installed in the door frame. To make the adjustment, it is necessary to loosen the two specified screws with a 4 mm hex key and lift up the door leaf to the required position. Holding the door leaf in the required position, tighten the fastening screws.

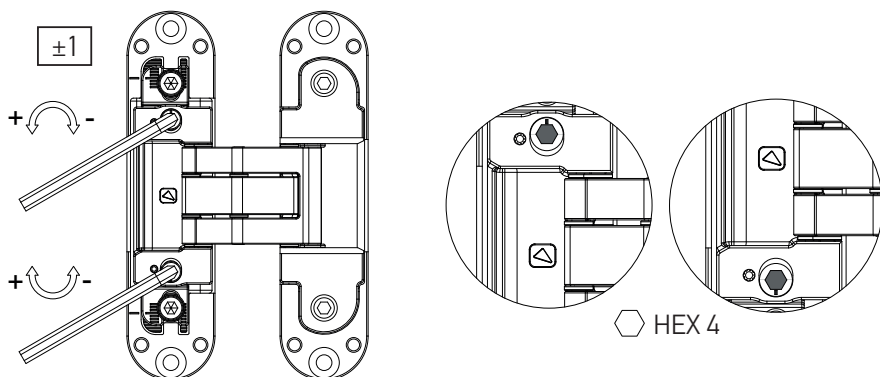
HORIZONTAL ADJUSTMENT (30/30×125)



Within +2.5 mm (toward the hinges) / -1.5 mm.

Horizontal adjustment is carried out on the part of the hinge installed in the door leaf. To make the adjustment, it is necessary to screw in or unscrew the two specified screws, using a 4 mm hex key, thereby setting the door leaf in the required position. It is not permitted to screw in or unscrew only one screw immediately to the extreme position, only sequential screwing.

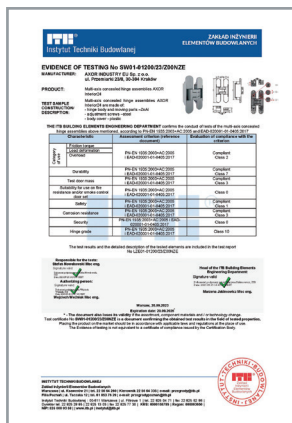
DEPTH ADJUSTMENT (30/30×125)



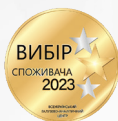
Within ±1 mm.

Depth adjustment is carried out on the part of the hinge installed in the door frame. To make the adjustment, it is necessary to rotate the two specified eccentric pins, using a 4 mm hex key. It is required only $\pm 90^\circ$ rotation of pin from the zero position, it is not permitted rotation 360° !

Hinges were tested in independent certified laboratories and received documents certifying their quality. The quality of AXOR Arte Interior concealed door hinges is confirmed by the quality certificate of the International Institute of Window and Door Technologies ITB. You can download certificates on the website axorindustry.com.



AXOR



AXOR INDUSTRY LLC

49041, Dnipro,
Pratsi Ave., 32
axorindustry.com



[instagram.com/axor_live](https://www.instagram.com/axor_live)



[facebook.com/AxorIndustry](https://www.facebook.com/AxorIndustry)



infoaxor@axorindustry.com



+38 067 55 42 777 Viber
(for messages only)